

# Effect of Chlorhexidine and *Benincasa Hispida* Pretreatment on Microshear Bond Strength of Universal Adhesive System on Dentin: A Pilot Study

GIRIJA S SAJJAN<sup>1</sup>, MANDA SRI SWATHI<sup>2</sup>, P ARUN BHUPATHI<sup>3</sup>, MADHU VARMA KANUMURI<sup>4</sup>, RAJULAPATI KALYAN SATISH<sup>5</sup>, RAMA KRISHNA ALLA<sup>6</sup>, TIPPIREDDY SRIJA<sup>7</sup>, CH UMA SHALINI<sup>8</sup>



## ABSTRACT

**Introduction:** Achieving strong bond strength of adhesive systems to deep dentin is challenging. Various methods to improve bond strength to deep dentin have been investigated. Chlorhexidine (CHX) enhances the longevity of the bond between adhesives and dentin by inhibiting the collagenolytic activity of Matrix Metalloproteinases (MMPs). *Benincasa hispida* is a natural plant-based functional food containing minerals and vitamins that help prevent osteoporosis and improve bone health.

**Aim:** To evaluate the Microshear Bond Strength (MSBS) of a 10-methacryloyloxydecyl-dihydrogen Phosphate-based (10-MDP) universal adhesive system to coronal dentin with different dentin surface pretreatments, specifically CHX and *Benincasa hispida*.

**Materials and Methods:** An in-vitro pilot study was conducted at the Department of Conservative Dentistry and Endodontics, Vishnu Dental College, Bhimavaram, Andhra Pradesh, India, from May 2023 to November 2023. Dentin discs (42) were prepared from human mandibular first molars. A standard etch-and-rinse protocol was performed on the discs. The specimens

were assigned to different dentin pretreatments: Group-I (no pretreatment), Group-II (CHX) and Group-III (*Benincasa hispida*). CHX and *Benincasa hispida* were applied using micro applicator tips. A dentin bonding agent containing 10-MDP (DBA) was applied, photopolymerised and a composite restoration was fabricated. The MSBS to dentin was evaluated using a universal testing machine. The failure patterns were analysed using a stereomicroscope at 10x magnification. One-way Analysis of Variance (ANOVA) and Tukey's Honestly Significant Difference (HSD) HSD tests were used for statistical analysis, with a significance level set at  $\alpha=0.05$ .

**Results:** The mean MSBS values were 24.2732±5.41329 MPa for Group-III, 14.3848±4.23492 MPa for Group-II and 6.9724±3.15837 MPa for Group-I. Pretreatment of dentin with *B. hispida* resulted in significantly higher MSBS values compared to the other two groups ( $p<0.001^*$ ).

**Conclusion:** Pretreatment with *B. hispida* significantly improved MSBS. Thus, *B. hispida* pretreatment may be beneficial in increasing dentin bond strength.

**Keywords:** Dentin bonding, Dentine pretreatment, Hybrid layer, Matrix metalloproteinase

## INTRODUCTION

In today's day and age, composite restorations have become a go-to option for everyday restorations due to their minimally invasive tooth preparation requirements, superior mechanical qualities and stunning aesthetics. Currently, dentin adhesive procedures encounter a challenge known as the "bonding era" problem. This problem is related to the long-term endurance of the hybrid layer, as research has demonstrated that the hybrid layer deteriorates over time [1]. A meta-analysis on the clinical success of posterior composite resin restorations reported a survival rate of 85-90% at the end of 10 years. The reasons for failures include fractures, loss of retention, loss of marginal integrity and unacceptable colour [2]. A suggested reason for these failures could be the degradation of the collagen matrix and hybrid layer over time [3,4]. Hence, the long-term structural durability of the hybrid layer plays a pivotal role and has been the focus of research in adhesion. The morphology, chemical composition and mechanical properties determine the structural durability of the hybrid layer [5].

Some strategies for increasing the durability of the hybrid layer include improving the mechanical properties and preventing hydrolysis of the hybrid layer [6]. A functional monomer, 10-methacryloyloxydecyl-dihydrogen Phosphate (10-MDP), is reported to increase bond strength by forming an insoluble MDP-calcium (MDP-Ca) salt [7]. These MDP-Ca salts are placed on the dentin

collagen scaffold to prevent bond deterioration. MDP creates a stable collagen-phosphate complex by hydrogen bonding with the collagen in dentin. In addition, both free MDP and the MDP-Ca salt inhibit MMPs and exogenous proteases [8]. However, some researchers have reported that 2-Hydroxyethyl Methacrylate (HEMA) in 10-MDP-containing bonding agents suppresses nanolayers between 10-MDP and mineralised tissue, compromising the mechanical properties of the hybrid layer [9].

Another method to improve the hybrid layer aims to prevent hydrolysis. The pro MMPs trapped during dentin formation get activated under conditions of lowered pH, such as in carious processes or during acid etching. These MMPs degrade collagen fibres and polymerised hydrophilic resin. Hence, the application of CHX, an MMP and cathepsin inhibitor, has significantly increased bond strength [10].

The CHX is a broad-spectrum MMP inhibitor and cationic antimicrobial agent. The calcium and zinc ions found in MMPs undergo cation chelation, which underlies the inhibitory action. CHX can attach to collagen fibrils of demineralised dentin through electrostatic forces after filling the binding sites of MMP enzymes [11]. An in-vitro study that employed micro-Raman spectroscopy to assess the presence of CHX in the resin/dentin interface after five years of water storage provided clear evidence for this. The study focused on cases where CHX was used as an aqueous

dentin pretreatment or included in the etchant [12]. However, CHX pretreatment with bonding agents containing 10-MDP demonstrated partial inhibition of collagenolytic activity. Giacomini MC et al., mentioned the need for further exploration of the negative impact of CHX when used with bonding agents containing 10-MDP in their research [13].

In a natural vegetarian diet, many fruits and vegetables are rich sources of minerals like calcium and phosphate. Vegetables from the gourd family are abundant in fibres, vitamins, essential minerals and antioxidants. *Benincasa hispida*, commonly known as ash gourd, is well-known for its nutritional and medicinal properties. The edible portion of *B. hispida* contains vitamin C, thiamine, riboflavin and vitamin E. Minerals such as sodium, potassium, calcium and phosphorus are also present in this vegetable. In traditional Indian medicine, the fresh juice of *B. hispida* is recommended as a source of good nutrition [14,15]. Ash gourd has been reported to improve bone health [16,17]. Since teeth and bones share hydroxyapatite in common, the dental application of *B. hispida* was considered. Therefore, in the present study, the authors explored the novel application of a *B. hispida* solution as a pretreatment for a dentin bonding agent. Moreover, as a natural product, it contains minerals in their purest form, eliminating any artificial components.

Currently, there is no research available on the effect of dentin pretreatment with *B. hispida* on adhesive bond quality. Thus, the present study aimed to evaluate the effects of different dentin surface pretreatments, such as CHX and *Benincasa hispida*, on the MSBS of coronal dentin using a universal testing machine with a 10 MDP-based universal adhesive system. Since the optimum concentration of *B. hispida* as a pretreatment for dentin bonding agents has not been established, the present study was conducted as a pilot study.

## MATERIALS AND METHODS

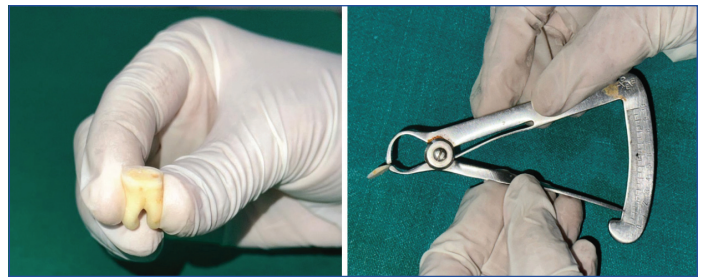
The present in-vitro pilot study was conducted at the Department of Conservative Dentistry and Endodontics, Vishnu Dental College, Bhimavaram, Andhra Pradesh, India, from May 2023 to November 2023. The Institutional Ethical Committee (IRB No: IECVDC/23/PG01/CE/IVT/5) approved the research protocol. The present research was executed in accordance with the Checklist for Reporting In-vitro Studies (CRIS) guidelines (equator.org). A convenience sample of 42 participants was selected.

**Inclusion and Exclusion criteria:** Forty-two human mandibular first molar teeth, freshly extracted due to poor periodontal health or for complete denture treatment, were selected for the present study. Teeth with carious and non carious lesions, crown or root fractures occurring during extraction and developmental anomalies were excluded.

### Study Procedure

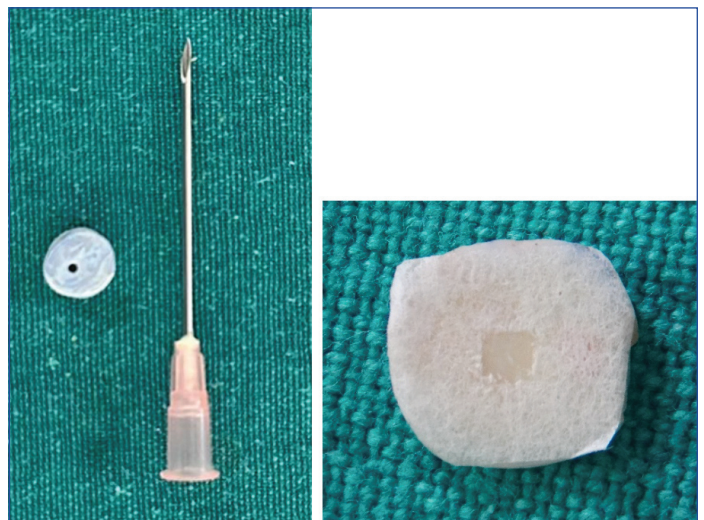
After ultrasonic scaling, the teeth were stored in a 0.5% thymol solution at 37°C. All the occlusal enamel was ground off using a diamond disc under water coolant and evaluated for the absence of enamel under a stereomicroscope (Olympus, Model SZX2-ILLT, Olympus Corporation, Shinjuku-ku, Tokyo, Japan) at magnifications of x12.5 and x20. A dentin slice approximately 1.0 mm thick was cut perpendicular to the long axis of each tooth from the upper middle coronal region using a low-speed diamond disk (Marathon M4 Micromotor) under water coolant [Table/Fig-1] [18]. The occlusal surfaces of the slices were ground with up to 600-grit silicon carbide paper to expose a flat dentin surface. The dentin slices were divided into three main groups (fourteen each): Group-I - no pretreatment, Group-II - CHX pretreatment and Group-III - *B. hispida* pretreatment, according to the surface pretreatments performed, using a randomisation technique (www.randomizer.org) [19].

A putty impression of an 18-gauge needle with an outer diameter of 1.27 mm was made [20]. This was used as a matrix to prepare



**[Table/Fig-1]:** A 1.0 mm thick dentin slice from upper middle coronal portion [18].

composite restorations with dimensions of 1.2 mm in diameter and 1 mm in height [Table/Fig-2] [21]. Surgical micropore adhesive tape was applied to the dentin disc, exposing only the bonding surface [Table/Fig-2] [22].



**[Table/Fig-2]:** Putty impression and micropore taped specimen [22].

**Preparation of *B. Hispida* juice:** In June, the vegetable was purchased from the local market in Bhimavaram, Andhra Pradesh, India. It was washed thoroughly and peeled to obtain only the internal portion from which the juice was intended to be extracted. The equipment (grater) used to grate the pulp was dried in sunlight for a whole day to sterilise it. The juice was extracted from the grated pulp of the vegetable by squeezing it in a sterile cloth into a sterile container. It was used immediately for the surface pretreatment.

The dentin slices in all three groups were etched with 37% phosphoric acid (3M Scotchbond Multipurpose Etchant) for 15 seconds, followed by rinsing for 15 seconds. The excess moisture was removed with absorbent paper.

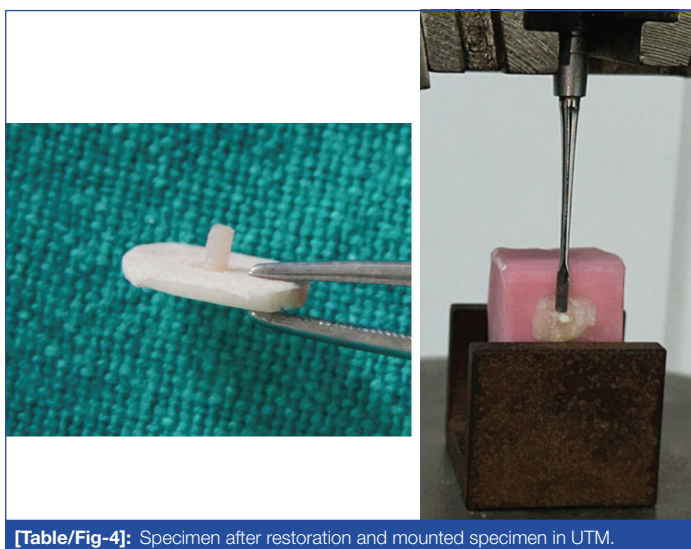
The dentin slices in Group-I did not receive any surface pretreatment, while Group-II and III underwent a passive application of 2% CHX solution (HexaChlor, Safe Endo Dental India Pvt. Ltd.) and a passive application of freshly prepared *B. hispida* juice, respectively, for 30 seconds [Table/Fig-3]. The excess solution was removed using absorbent paper.

All dentin slices were then treated with an active application of a layer of Dentin Bonding Agent containing 10-MDP (DBA) (Adper Single Bond Universal, 3M ESPE) [23] for 20 seconds, followed by solvent evaporation for five seconds using a 3-way syringe. The Dentin Bonding Agent was light-cured with LED equipment (Woodpecker Ltd., intensity 1000 mW/cm<sup>2</sup>) for 20 seconds. Composite resin (3M ESPE Filtek Z250 XT Nano Hybrid Universal Restorative) was placed onto the dentin discs using a putty impression as a matrix and photopolymerised with LED equipment (Woodpecker Ltd., intensity 1000 mW/cm<sup>2</sup>) for 20 seconds [Table/Fig-4].

The samples were then embedded in resin blocks and stored in distilled water. Subsequently, the samples were subjected to a MSBS test using a Universal Testing Machine (AE-UTM-LC2 Advanced Equipment, Thane, India). A flat, sharp chisel with dimensions of 6



[Table/Fig-3]: Two pretreatment materials.



[Table/Fig-4]: Specimen after restoration and mounted specimen in UTM.

mm in length and 3 mm in width was placed as close as possible to the resin-dentin interface [Table/Fig-4]. The resin-dentin interfaces of the specimens and the chisel were aligned as straight as possible to ensure shear orientation. A shear force was applied to the specimen at a crosshead speed of 0.5 mm/min until failure occurred. The loads at failure were recorded using the formula [18,21].

**Debonding force (N)/Bonding area (mm<sup>2</sup>):** The failed samples were examined to assess the failure patterns under a stereomicroscope at 20x magnification. This examination aimed to determine whether the debonding occurred at the resin-dentin interface, within the adhesive, or within the dentin. The failures were classified as follows: a) adhesive failure between dentin and resin; b) cohesive failure in the resin; c) cohesive failure in the dentin; and d) mixed failure [24].

### STATISTICAL ANALYSIS

A one-way ANOVA test (for group-wise comparison) and a Tukey's HSD test (for pair-wise comparison) were used to analyse the data.

The Chi-square test was employed to determine the association between the three groups in the failure mode analysis. The results were considered statistically significant when  $p \leq 0.05$ .

### RESULTS

The group-wise comparison of mean and standard deviation of MSBS values is shown in [Table/Fig-5]. As illustrated, the pretreatment of dentin bonding agents with *B. hispidia* resulted in the highest mean MSBS value, followed by the CHX and no pretreatment (control) groups. One-way ANOVA indicated statistically significant differences in bond strength values among the groups ( $p < 0.001$ ).

Consequently, the Tukey's HSD test was applied for pair-wise comparisons. The results demonstrated statistically significant differences in the mean bond strength values between the Control and CHX groups, the Control and *B. hispidia* groups, as well as the CHX and *B. hispidia* groups ( $p < 0.001$ ) [Table/Fig-6].

Among the three groups, adhesive failures were more prevalent in Group-I, with 8 cases (57.1%), while the least adhesive failures were observed in Group-III, with only 1 case (7.1%). Cohesive failures were more common in Group-III, totaling 7 cases (50.0%) and were least frequent in Group-I, with three cases (7.1%). Mixed-type failures were more frequent in Group-III, with 6 cases (42.9%) and least frequent in Group-II, with 1 case (21.4%). There was a significant difference in failure modes among the three groups, with a p-value of 0.029 [Table/Fig-7,8].

### DISCUSSION

The results of the present study demonstrated a statistically significant difference in MSBS values among the three groups. Pretreatment with *B. hispidia* resulted in significantly higher MSBS compared to both the pretreatment with CHX and the no pretreatment group.

Three methods for improving dentin bond strength are reported in the literature and were tested in the present study. The first method involved using a functional monomer, such as 10-MDP (Adper Single Bond Universal, 3M ESPE), which enhances chemical and micro-mechanical adhesion by binding with hydroxyapatite in dentin and enamel, forming MDP-Ca salts in the specimens of Group-I. The second method involved the pretreatment of etched dentin with MMP inhibitors, such as CHX, in the specimens of Group-II. The third method consisted of pre-treating etched dentin with *B. hispidia* juice to promote the mineralisation of the hybrid layer, as seen in the specimens of Group-III.

In the present study, Group-I samples were treated with a bonding agent containing 10-MDP, following a conventional protocol without dentin pretreatment. The mean bond strength achieved was 6.9724 MPa, with a standard deviation of 3.158. A similar study achieved a MSBS of 15.60 MPa using self-etch adhesive systems containing HEMA and 10-MDP monomers, but it was conducted with bovine dentin [25]. Another study involving 10-MDP bonding agents (Clearfil SE Bond and Clearfil Tri-S Bond) in self-etch mode reported MSBS bond strength values of 36.9 MPa and 28.5 MPa achieved immediately and after 24 hours, respectively. However, that study also used bovine teeth, which may account for the variation in bond strength [26]. Both studies used dentin from incisors as a bonding substrate, whereas in the present study,

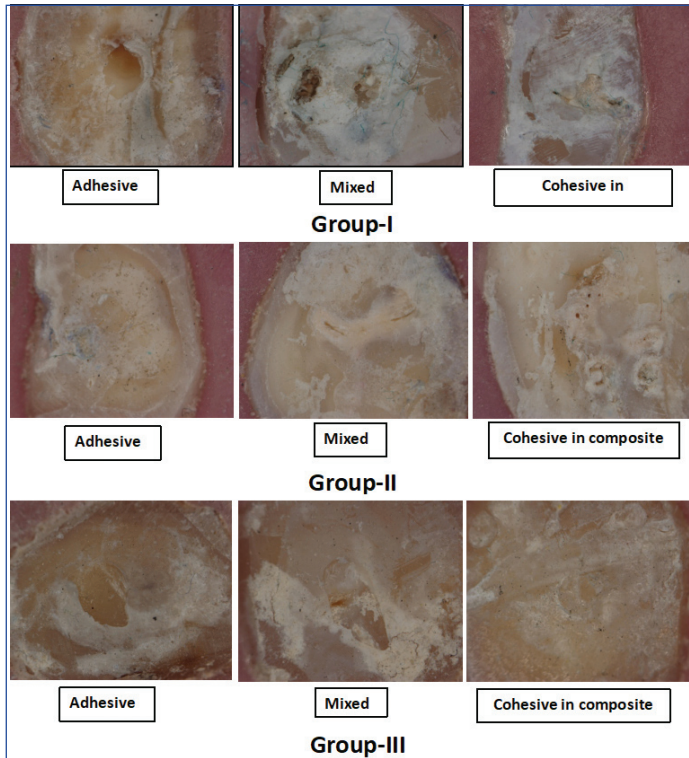
Group	n	Mean (MPa)	Std. deviation	Std. error	95% CI		Min	Max	p-value
					Lower bound	Upper bound			
Control (I)	14	6.9724	3.15837	0.84411	5.1488	8.7959	1.91	12.52	<0.001*
CHX (II)	14	14.3848	4.23492	1.13183	11.9396	16.8300	6.52	20.97	
<i>B. hispidia</i> (III)	14	24.2732	5.41329	1.44676	21.1477	27.3988	17.67	33.35	

[Table/Fig-5]: Group-wise comparison of MSBS bond strength.

\*Statistically significant difference-  $p < 0.05$ ; †One-way ANOVA

Pair 1	Pair 2	Mean difference	Std. error	p-value	95% Confidence interval	
					Lower bound	Upper bound
Control	CHX	-7.41243*	1.65059	<0.001*	-11.4338	-3.3911
Control	<i>B. hispid</i>	-17.30086*	1.65059	<0.001*	-21.3222	-13.2795
CHX	<i>B. hispid</i>	-9.88843*	1.65059	<0.001*	-13.9098	-5.8671

**[Table/Fig-6]:** Pair-wise comparison of MSBS bond strength. \*Statistically significant difference- p<0.05; †Tukey's HSD test



**[Table/Fig-7]:** Stereomicroscope images representing the mode of failure at x20.

Failure modes	Groups			Chi-square value	p-value
	I (No-pretreatment)	II (CHX-pretreatment)	III ( <i>B.hispida</i> pretreatment)		
Adhesive	8 (57.1%)	7 (50.0%)	1 (7.1%)	10.800†	0.029*
Cohesive in composite	3 (21.4%)	6 (42.9%)	7 (50.0%)		
Mixed	3 (21.4%)	1 (7.1%)	6 (42.9%)		

**[Table/Fig-8]:** Comparison of mode of failure between the groups. \*Statistically significant difference- p- <0.05; †Chi-square test

dentin from molars was utilised with the etch-and-rinse technique. The formation of water-insoluble MDP-Ca salts enhances bond adhesion, durability and strength, with “nano-layering” of MDP-Ca

salts proposed as the mechanism. However, the lengthy carboxyl chain of 10-MDP leads to poor monomer polymerisation and a low elastic modulus at the interface. The presence of HEMA suppresses the formation of nanolayers between 10-MDP and mineralised tissue, resulting in lower mechanical integrity during hybridisation [25].

Analysis of the fracture pattern yielded a majority of adhesive fractures (57.1%), followed by fewer mixed fractures (21.4%) and cohesive composite fractures (21.4%) in Group-I. This finding supports the lowest MSBS bond strength achieved in the present experiment.

Many topical treatments on dentin have been researched, aimed at altering the physical and chemical properties to enhance resin-dentin bonding. Such treatments transform a previously hydrophilic, crystalline and relatively impermeable acid-labile surface into a more hydrophobic, organic, highly permeable and acid-resistant surface. Inhibition of collagenolytic activity using CHX is an important strategy to increase resistance to enzymatic degradation [27].

In Group-II, the mean MSBS achieved was 14.38 MPa, which was significantly higher than that of Group-I, with a p-value of less than 0.001. Analysis of the fracture pattern showed fewer adhesive fractures (50.0%), mixed fractures (7.1%) and cohesive composite fractures (42.9%) in Group-II compared to Group-I. This supports the higher MSBS values achieved in Group-II compared to Group-I in the experiment.

The association between CHX and adhesive systems in the bonding procedure could be a promising strategy to increase the durability of restorations due to the anti-gelatinolytic activity of CHX applied prior to the adhesive systems. According to previous literature, acid-etched dentin treated with CHX prevents MMP activity and decreases collagen solubility [13]. Consequently, the MSBS values of the CHX group were significantly better than those of the control Group-I in the present study [28]. Similar findings have been reported in several studies conducted by Carrilho MR et al., Zhang YB et al., Leitune VC et al., and Dionysopoulos D [Table/Fig-9] [29-32].

The CHX has been reported to ultimately diffuse out of the polymerised resin network, as it cannot co-polymerise with methacrylate resin monomers. Furthermore, its electrostatic bonding characteristics compromise the long-term anti-MMP effectiveness of CHX, as water acts as a desorption medium [13].

According to Gao X et al., topical mineralisation with calcium/phosphorus (Ca/P) ion release after bonding procedures might not improve adhesive bond strength. The spatiotemporal mismatch of mineralising agents and the hybrid layer prevents mineral deposition in the collagen fibril network. Therefore, dentin collagen mineralisation during hybridisation could be a promising technique for intrafibrillar mineralisation [33]. With all of this in mind, the use of

S. no	Author's name and Year	Place of study	Number of subjects	Pretreatment agent	Results	Conclusion
1.	Carrilho MR et al., 2007 [29]	Brazil	7	2% Chlorhexidine (CHX)	Microtensile Bond strength CHX group-30 MPa No pretreatment group-20 MPa 9.3% adhesive bond failures in CHX group 29.5% bond failures in no pretreatment group	CHX pretreatment improved bond strength
2.	Zhang YB et al., 2010 [30]	Brazil	40	2% Chlorhexidine (CHX)	Microtensile Bond strength CHX group-23.19 MPa No pretreatment group-19.10 MPa	CHX pretreatment improved bond strength
3.	Leitune VC, Portella FF et al., 2011. [31]	Brazil	40	2% Chlorhexidine (CHX)	Microshear Bond strength (MSBS) CHX group-24.48 MPa No pretreatment group-19.93 MPa	CHX pretreatment improved bond strength
4.	Dionysopoulos D et al., 2016 [32]	Greece	Systematic review, 102 studies	2% Chlorhexidine (CHX)	CHX exhibited better bond strength than the control experimental groups Further investigations are required	CHX pretreatment improved bond strength
5.	Present study	India	42	2% Chlorhexidine (CHX). <i>B. hispid</i>	<i>B. hispid</i> exhibited better bond strength than the control and experimental groups	<i>B. hispid</i> pretreatment improved bond strength

**[Table/Fig-9]:** Comparative studies from the literature [29-32].

*B. hispida* was considered, as it has the potential to be a source of minerals in their purest and most natural form.

The mean MSBS of Group-III (24.27 MPa) is significantly higher than that of Group-I and II, with a p-value <0.001\*. This increase in bond strength may be attributed to *B. hispida* being a rich source of minerals, including sodium, potassium, calcium, iron and phosphorus, as well as antioxidants and polysaccharides found in fruit extract. It also contains vitamins such as vitamins C and E, riboflavin and niacin [15].

Analysis of the fracture pattern revealed lower adhesive fractures (7.1%), mixed fractures (42.9%) and cohesive composite fractures (50.0%) in Group-III compared to Group-II. This supports the higher MSBS values achieved in Group-III compared to Group-II in the experiment.

In the literature, the use of *B. hispida* is reported to improve bone health [16,17]. An animal study indicated the beneficial role of *B. hispida* in collagen health and bone mineralisation [16,17]. Supplementation with *Benincasa hispida* Extract (BHE) in Ovariectomy-Induced Osteoporosis (OVX) mice resulted in the prevention of Bone Mineral Density (BMD) reduction, as well as an increase in mineralisation and collagen health. This condition is often caused by low calcium intake, inactivity and decreased oestrogen output. The bioactive compound 2-furocid present in BHE can be added to food materials to enhance bone health [16,17]. Bones and teeth share common chemistry, including calcium hydroxyapatite crystals.

The presence of 2-furocid acid and minerals such as calcium and phosphorus may have contributed to increased mineralisation of the hybrid layer. The polysaccharides found in the fruit extract exhibit significant antioxidant effects. Additionally, the fruit extract contains vitamins E and C, which further enhance its beneficial effects. The combination of these minerals and antioxidant properties may have led to increased MSBS values [14-17].

### Limitation(s)

The optimum concentration of *B. hispida* must be established. It is necessary to analyse the bioactive compounds of *B. hispida* and to study the molecular mechanisms of action on human dentin. Future studies will focus on evaluating the release of minerals from *B. hispida* onto the surface of dentin, the mineralisation of the hybrid layer and the long-term durability of the hybrid layer formed by the application of *B. hispida*.

### CONCLUSION(S)

The MDP-containing bonding agents with *B. hispida* pretreatment showed significantly higher MSBS than Group-I and II. MDP-containing bonding agents with CHX pretreatment exhibited significantly higher MSBS compared to Group-I. Minimum adhesive failures were observed in Group-III compared to Group-I and II. Pretreatment with *B. hispida* may be beneficial for increasing dentin bond strength.

### REFERENCES

- Moon PC, Weaver J, Brooks CN. Review of matrix metalloproteinases' effect on the hybrid dentin bond layer stability and chlorhexidine clinical use to prevent bond failure. *Open Dent J*. 2010;4:147-52.
- Heintze SD, Loguercio AD, Hanzen TA, Reis A, Rousson V. Clinical efficacy of resin-based direct posterior restorations and glass-ionomer restorations – An updated meta-analysis of clinical outcome parameters. *Dent Mater*. 2022;38(5):e109-e135.
- Pashley DH, Tay FR, Breschi L, Tjäderhane L, Carvalho RM, Carrilho M, et al. State of the art etch-and-rinse adhesives. *Dent Mater*. 2011;27(1):1-16. Doi: 10.1016/j.dental.2010.10.016. Epub 2010 Nov 27. PMID: 21112620; PMCID: PMC3857593.
- Breschi L, Mazzoni A, Ruggeri A, Cadenaro M, Di Lenarda R, De Stefano Dorigo E. Dental adhesion review: aging and stability of the bonded interface. *Dent Mater*. 2008;24(1):90-101. Doi: 10.1016/j.dental.2007.02.009. Epub 2007 Apr 17. PMID: 17442386.
- Carvalho RM, Manso AP, Geraldelli S, Tay FR, Pashley DH. Durability of bonds and clinical success of adhesive restorations. *Dent Mater*. 2012;28(1):72-86. Doi: 10.1016/j.dental.2011.09.011. PMID: 22192252; PMCID: PMC3863938.
- Tjäderhane L, Nascimento FD, Breschi L, Mazzoni A, Tersariol IL, Geraldelli S, et al. Strategies to prevent hydrolytic degradation of the hybrid layer- A review. *Dent Mater*. 2013;29(10):999-1011.
- Yoshida Y, Yoshihara K, Nagaoka N, Hayakawa S, Torii Y, Ogawa T, et al. Self-assembled Nano-layering at the Adhesive Interface. *J Dent Res*. 2012;91(4):376-81.
- Jin X, Han F, Wang Q, Yuan X, Zhou Q, Xie H, et al. The roles of 10-methacryloyloxydecyl dihydrogen phosphate and its calcium salt in preserving the adhesive-dentin hybrid layer. *Dent Mater*. 2022;38(7):1194-205.
- Zhou J, Wurihan Y, Shibata R, Tanaka Z, Zhang K, Zheng Q, et al. Quantitative/qualitative analysis of adhesive-dentin interface in the presence of 10-methacryloyloxydecyl dihydrogen phosphate. *J Mech Behav Biomed Mater*. 2019;92:71-78.
- Saffarpour A, Valizadeh S, Amini A, Kharazifard M, Rohaninasab M. Effect of matrix metalloproteinase inhibitors on microtensile bond strength of dental composite restorations to dentin in use of an etch-and-rinse adhesive system. *Clinical & Exp Dental Res*. 2020;6(6):686-92.
- Yaghmoor RB, Jamal H, Abed H, Allan E, Ashley P, Young A. Incorporation of MMP inhibitors into dental adhesive systems and bond strength of coronal composite restorations: A systematic review and meta-analysis of in-vitro studies. *Jpn Dent Sci Rev*. 2022;58:298-315.
- Loguercio AD, Hass V, Gutierrez MF, Luque-Martinez IV, Szezs A, Stanislawczuk R, et al. Five-year effects of chlorhexidine on the in-vitro durability of resin/dentin interfaces. *J Adhes Dent*. 2016;18(1):35-42.
- Giacomini MC, Scaffa PMC, Gonçalves RS, Zabeu GS, Vidal CdMP, Carrilho MRdO, et al. Profile of a 10-MDP-based universal adhesive system associated with chlorhexidine: Dentin bond strength and in situ zymography performance. *J Mech Behav Biomed Mater*. 2020;110:103925.
- Mohammad NA, Anwar F, Mehmood T, Hamid AA, Muhammad K, Saari N. Phenolic compounds, tocopherols profile and antioxidant properties of winter melon [*Benincasa hispida* (Thunb.) Cogn.] seed oils. *Food Measure*. 2019;13:940-48. <https://doi.org/10.1007/s11694-018-0008-x>.
- Islam MT, Quispe C, El-Kersh DM, Shill MC, Bhardwaj K, Bhardwaj P, et al. A literature-based update on *Benincasa hispida* (Thunb.) Cogn.: traditional uses, nutraceutical, and phytopharmacological profiles. *Oxid Med Cell Longev*. 2021;2021:6349041. Doi: 10.1155/2021/6349041. PMID: 34925698; PMCID: PMC8683187.
- Choi Y-E, Yang J-M, Cho J-H. *Benincasa hispida* extract promotes proliferation, differentiation, and mineralization of MC3T3-E1 preosteoblasts and inhibits the differentiation of raw 246.7 Osteoclast Precursors *Appl Sci*. 2022;12:8849. <https://doi.org/10.3390/app12178849>.
- Choi S, Han X, Men X, Lee S, Oh G, Choi Y, et al. *Benincasa hispida* extract prevents ovariectomy-induced osteoporosis in female ICR mice. *Appl Sci*. 2023;13(2):832.
- Althomali YM, Ebrahim MI. Microshear bond strength of Nano-Bond adhesive containing nanosized aluminum trioxide particles. *J Orthod Sci*. 2017;6(2):71-75. Doi: 10.4103/jos.JOS\_158\_16. PMID: 28546960; PMCID: PMC5433107.
- <https://www.randomizer.org/#randomize>
- <https://www.hamiltoncompany.com/laboratory-products/needles-knowledge/needle-gauge-chart>.
- Valizadeh S, Moradi A, Mirazei M, Amiri H, Kharazifard MJ. Microshear bond strength of different adhesive systems to dentin. *Front Dent*. 2019;16(4):265-71. Doi: 10.18502/fid.v16i4.2085. Epub 2019 Aug 30. PMID: 32342055; PMCID: PMC7181353.
- Shimaoka AM, de Andrade AP, Cardoso MV, de Carvalho RC. The importance of adhesive area delimitation in a  $\mu$ SBS bond strength experimental design. *J Adhes Dent*. 2011;13(4):307-14.
- 3m-single-bond-universal-adhesive-technical-product-profile.pdf
- Koyuturk AE, Tokay U, Sari ME, Ozmen B, Cortcu M, Acar H, et al. Influence of the bulk fill restorative technique on microleakage and microtensile of class II restorations. *Pediatr Dent J*. 2014;24(3):148-52.
- Pimentel de Oliveira R, de Paula BL, Ribeiro ME, Alves E, Costi HT, Silva C. Evaluation of the bond strength of self-etching adhesive systems containing HEMA and 10-MDP monomers: bond strength of adhesives containing HEMA and 10-MDP. *Int J Dent*. 2022;2022:5756649.
- Harnirattisai C, Roengrungreang P, Rangsisiripaiboon U, Senawongse P. Shear and micro-shear bond strengths of four self-etching adhesives measured immediately and 24 hours after application. *Dent Mater*. 2012;31(5):779-87.
- Frassetto A, Breschi L, Turco G, Marchesi G, Di Lenarda R, Tay FR, et al. Mechanisms of degradation of the hybrid layer in adhesive dentistry and therapeutic agents to improve bond durability- A literature review. *Dent Mater*. 2016;32(2):e41-e53.
- Lima BC de O, Zeni TC, Mendonça MJ, Roque JVO, Ueda JK, Menolli RA, et al. Chlorhexidine added to different adhesive systems- Assessment of antibacterial activity and bond strength. *Research, Society and development*. [Internet]. 2022Feb.18 [cited 2024Jun.7];11(3):e19011325785. Available from: <https://rsdjournal.org/index.php/rsd/article/view/25785>.
- Carrilho MR, Carvalho RM, de Goes MF, di Hipólito V, Geraldelli S, Tay FR, et al. Chlorhexidine preserves dentin bond in-vitro. *J Dent Res*. 2007;86(1):90-94. Doi: 10.1177/154405910708600115. PMID: 17189470; PMCID: PMC2248723.
- Zhang YB, Li Y, Yao K, Liang GB. Effect of concentration of chlorhexidine on bonding durability of dentine and resin. *Zhonghua Kou Qiang Yi Xue Za Zhi*. 2010;45(2):94-97. Chinese. PMID: 20368003.
- Leitune VC, Portella FF, Bohn PV, Collares FM, Samuel SM. Influence of chlorhexidine application on longitudinal adhesive bond strength in deciduous teeth. *Braz Oral Res*. 2011;25(5):388-92. Doi: 10.1590/s1806-83242011000500003. PMID: 22031050.

- [32] Dionysopoulos D. Effect of digluconate chlorhexidine on bond strength between dental adhesive systems and dentin: A systematic review. *J Conserv Dent.* 2016;19(1):11-16. Doi: 10.4103/0972-0707.173185. PMID: 26957786; PMCID: PMC4760005.
- [33] Gao X, Wang Z, Yang H, Huang C. Rapid intrafibrillar mineralization strategy enhances adhesive-dentin interface. *J Dent Res.* 2024;103(1):42-50.

**PARTICULARS OF CONTRIBUTORS:**

1. Head, Department of Conservative Dentistry and Endodontics, Vishnu Dental College, Bhimavaram, Andhra Pradesh, India.
2. Postgraduate Student, Department of Conservative Dentistry and Endodontics, Vishnu Dental College, Bhimavaram, Andhra Pradesh, India.
3. Assistant Professor, Department of Orthodontics, Vishnu Dental College, Bhimavaram, Andhra Pradesh, India.
4. Professor, Department of Conservative Dentistry and Endodontics, Vishnu Dental College, Bhimavaram, Andhra Pradesh, India.
5. Professor, Department of Conservative Dentistry and Endodontics, Vishnu Dental College, Bhimavaram, Andhra Pradesh, India.
6. Professor, Department of Dental Materials, Vishnu Dental College, Bhimavaram, Andhra Pradesh, India.
7. Postgraduate Student, Department of Conservative Dentistry and Endodontics, Vishnu Dental College, Bhimavaram, Andhra Pradesh, India.
8. Postgraduate Student, Department of Conservative Dentistry and Endodontics, Vishnu Dental College, Bhimavaram, Andhra Pradesh, India.

**NAME, ADDRESS, E-MAIL ID OF THE CORRESPONDING AUTHOR:**

Girija S Sajjan,  
Head, Department of Conservative Dentistry and Endodontics,  
Vishnu Dental College, Vishnupur, Bhimavaram-534202, Andhra Pradesh, India.  
E-mail: girijasajjan@vdc.edu.in

**PLAGIARISM CHECKING METHODS:** [Jain H et al.]

- Plagiarism X-checker: Jun 10, 2024
- Manual Googling: Jul 22, 2024
- iThenticate Software: Sep 14, 2024 (14%)

**ETYMOLOGY:** Author Origin**EMENDATIONS:** 7**AUTHOR DECLARATION:**

- Financial or Other Competing Interests: None
- Was Ethics Committee Approval obtained for this study? Yes
- Was informed consent obtained from the subjects involved in the study? No
- For any images presented appropriate consent has been obtained from the subjects. NA

Date of Submission: **Jun 08, 2024**Date of Peer Review: **Jul 23, 2024**Date of Acceptance: **Sep 16, 2024**Date of Publishing: **Nov 01, 2024**